

Suncorp Bank Virtual POS Batch Loader Manual

August 2013



Copyright

Suncorp Bank and its vendors own the intellectual property in this Manual exclusively. You acknowledge that you must not perform any act which infringes the copyright or any other intellectual property rights of Suncorp Bank or its vendors and cannot make any copies of this Manual unless in accordance with these terms and conditions.

Without our express written consent you must not:

- Distribute any information contained in this Manual to the public media or quote or use such information in the public media; or
- Allow access to the information in this Manual to any company, firm, partnership, association, individual, group of individuals or other legal entity other than your officers, directors and employees who require the information for purposes directly related to your business.

License Agreement

The software described in this Manual is supplied under a license agreement and may only be used in accordance with the terms of that agreement.

Trademarks

All third-party product and service names are trademarks or registered trademarks of their respective owners.

Suncorp Bank
GPO Box 2432
Brisbane QLD 4001
Phone 13 11 75
www.suncorpbank.com.au

Contents

Copyright	2	Appendix A	23
License Agreement	2	Appendix B	27
Trademarks	2	ERRBATCHLOADER (BatchLoader Configuration Errors)	27
Using this Manual	5	ERRRECORD (Batch File Record Errors)	28
Purpose	5	ERRPC (Payment Client Errors)	28
Related Documents	5	Appendix C	29
Other Software Dependencies	5	BATCHLINESTANDARD	29
Essential Knowledge	6	BATCHLINESTANDARD - Refund - Input Format	30
Distribution	6	BATCHLINESTANDARD - Refund - Output Format	31
Functional Overview	6	BATCHLINESTANDARD - Example	31
Prerequisites	6		
Two Step Manual Processing Cycle	7		
Input and Output File Format	7		
Input and Output File Locations	7		
Validate Only Cycle	7		
Processing Cycle	8		
Windows Installation	9		
Installation Package	9		
Installation Process	9		
Post Installation Configuration	12		
Using the Batch Loader	13		
Starting the Batch Loader in Windows	13		
The Validate Only Cycle	13		
1. Batch File Input Directory	13		
2. Opening a Batch File	14		
3. Ensuring that "Validate Only" is Checked	14		
4. Starting the "Validate Only" Cycle	15		
5. Checking the Results from the "Validate Only" Cycle	15		
6. Amending the Input Batch File	16		
The AMA Configuration Screen	17		
The Processing Cycle	17		
7. Ensuring that "Validate Only" is Cleared	18		
8. Starting the "Processing" Cycle	18		
9. Waiting for the "Processing" Cycle to Finish	19		
10. Checking the Results from the "Processing" Cycle	19		
Business Processes for Declined and Error Transactions	20		
Refunding Transactions	20		
Before Uninstalling the Batch Loader	20		
Uninstalling the Batch Loader in Windows	20		
Advanced Functions	21		
Automating Batch Loader	21		
Custom input directory	21		
Recurring Payments	22		

Using this Manual

This section contains information that helps you understand and use the information contained in this manual.

Purpose

The Batch Loader is an application facilitating the batched processing of credit card transactions.

This Batch Loader R2.0 User Manual helps end users to understand the installation and operational requirements of the Batch Loader application.

Related Documents

This document is intended to be used with reference to various other documents detailing systems that this application depends upon. The reader is advised to consult the following documents to gain an in-depth understanding of the application:

Field Types

Merchant Administration Guide

Other Software Dependencies

The Batch Loader depends upon the following 3rd party software:

Software	Version	URL
Java Runtime Environment	SUN JRE 6	http://java.sun.com/
OR	OR	
Java Development Kit	SUN JDK 6	

Furthermore, the application requires connectivity to the internet in order to send transactions to the Payment Server.

Essential Knowledge

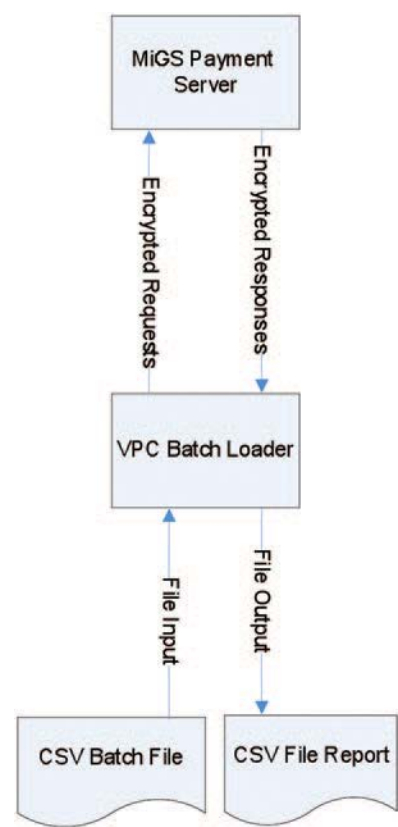
Distribution

The Batch Loader installation package is distributed to merchants who have been approved by Suncorp Bank for the batched processing of transactions.

Note: the Batch Loader installation package must NOT be redistributed without the prior consent of Suncorp Bank.

Functional Overview

The following diagram depicts the communication between the Batch Loader and various components of the MiGS service:



Communication between the Batch Loader and the Server

As the Batch Loader communicates with the server via Virtual POS, the Batch Loader must only use Merchant IDs linked to the keys in Virtual POS.

Prerequisites

SUN JRE/JDK must be installed prior to the installation of the Batch Loader. Please refer to the “Related Documents” and “Other Software Dependencies” for further information on obtaining and installing this software.

Furthermore, a valid Merchant ID must be active on the MiGS service, with the following “Global Permissions” enabled:

Virtual POS

MOTO

Refunds processing requires an Advanced Merchant Administration username and password.

Two Step Manual Processing Cycle

VITAL INFORMATION: Merchants operating the Batch Loader application manually must process transactions in a two step process:

1. Validate Only Cycle – this process prescreens the input file for commonly known errors, and outputs information on which transactions are correctly formatted, and which transactions will definitely fail. In the Validate Only Cycle, no transactions will be sent to the Payment Server. This allows the merchant to correct formatting errors. Once the user is happy with a validated input file, they may proceed to the next step.

Note: the application defaults with the validate only option enabled, however the user may manually skip this step. Validation is highly recommended to reduce rework on failed transactions.

Processing Cycle – this process will send transactions to the Payment Server. Any transactions that had failed validation, but had not been corrected, will not be sent to the server.

Note: indepth information on using the application will be detailed in the section “Using the Batch Loader”.

Automatic Processing Cycle - Automatic Processing will be covered in the Advanced Section of this manual.

Input and Output File Format

The Batch Loader application processes transaction commands from comma separated value (CSV) input files. Likewise, it outputs results to CSV output files.

Input and Output File Locations

The Batch Loader application picks up input files from the following subdirectory:

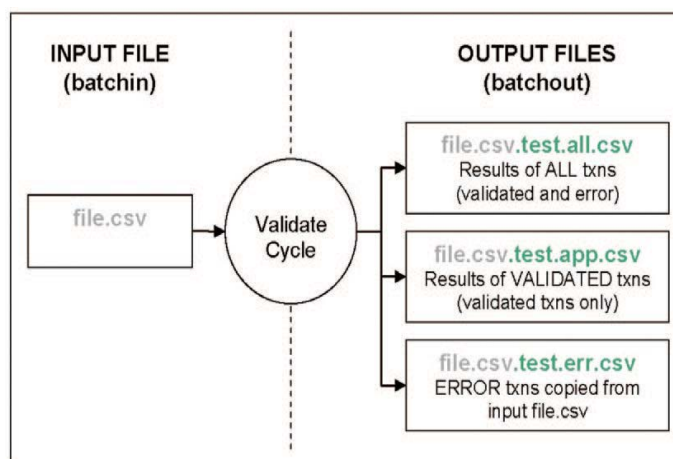
<BATCHEHOME>\batchin (by default)

and generates output files in:

<BATCHEHOME>\batchout(enforced)

where <BATCHEHOME> is the directory in which the application has been installed. The user may select input files from other directories, however the output files will always be generated in the “batchout” directory.

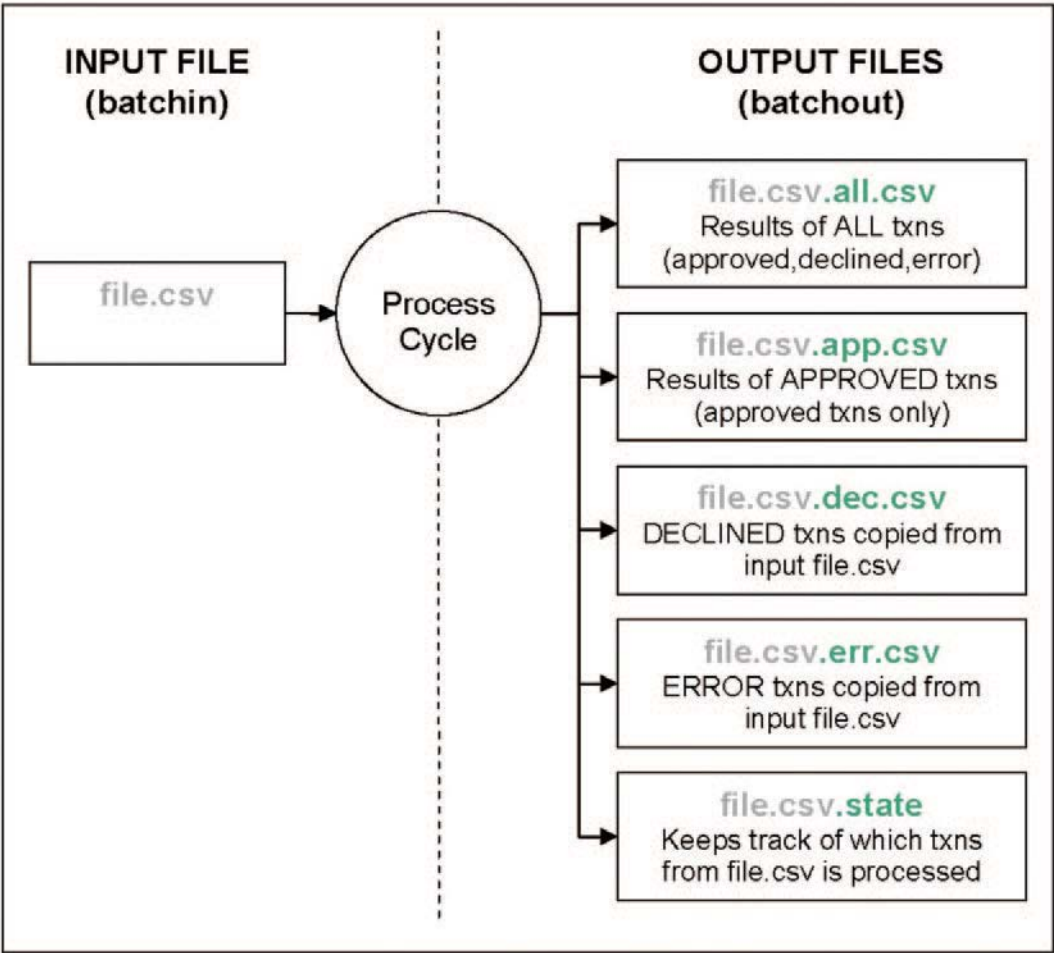
Validate Only Cycle



In the Validate Only Cycle, users can validate the file, make any adjustments necessary, and validate the file again. There is no limit on the number of times a file can be validated.

Note: the output filenames are prefixed with the input filename. This is to allow easy identification of results.

Processing Cycle



In the Processing Cycle, the file.csv.state file is used to keep track of which lines in the input file.csv has been processed. Should the process be interrupted, processed transactions will not be sent again. The program will resume at the first unprocessed transaction.

Note: the application keeps track of results and processed transactions via the unique filename. Once the Processing Cycle has been initiated, the user **MUST NOT CHANGE/DELETE** the filenames or contents of the files illustrated above.

The declined file.csv.dec.csv and error file.csv.err.csv files contain declined and error transactions exactly as they appear in the input file. The user can make a copy of these files, make any corrections necessary, and reprocess these failed transactions. NOTE: it is recommended that the user does not change the declined and error output files, but rather make a different copy for reprocessing. The user can copy these files to the input directory and make modifications there.

Windows Installation

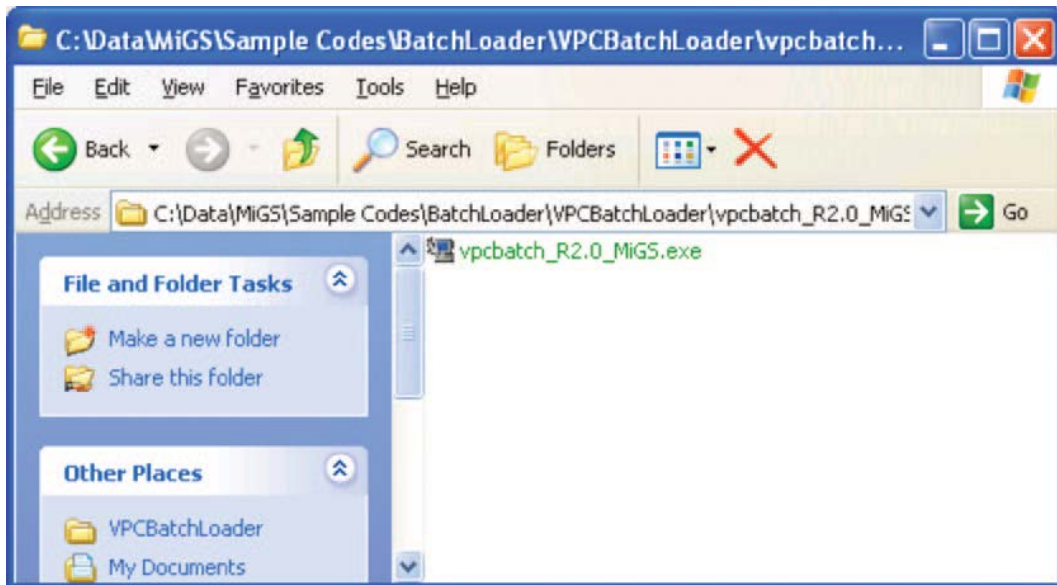
This section contains information on the installation and general configuration of the Batch Loader.

Installation Package

The Batch Loader is distributed via a package named:

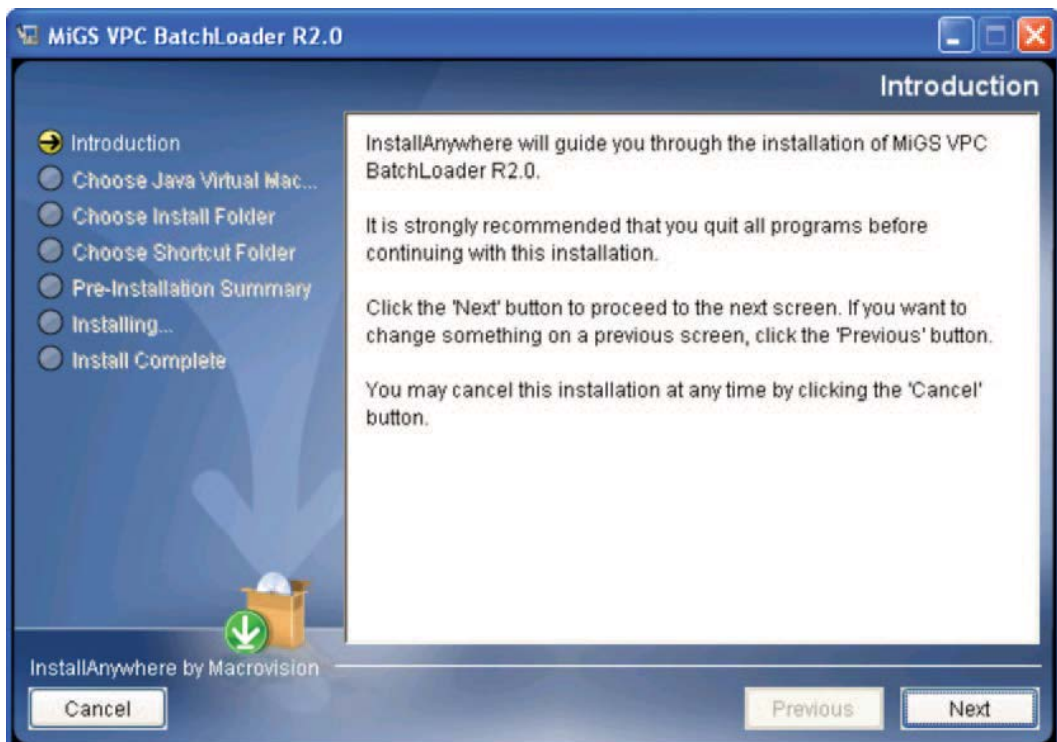
vpcbatch_<version>_MiGS.exe

where <version> is the current version of the application. To initiate the installation process, doubleclick the installation package:



Installation Process

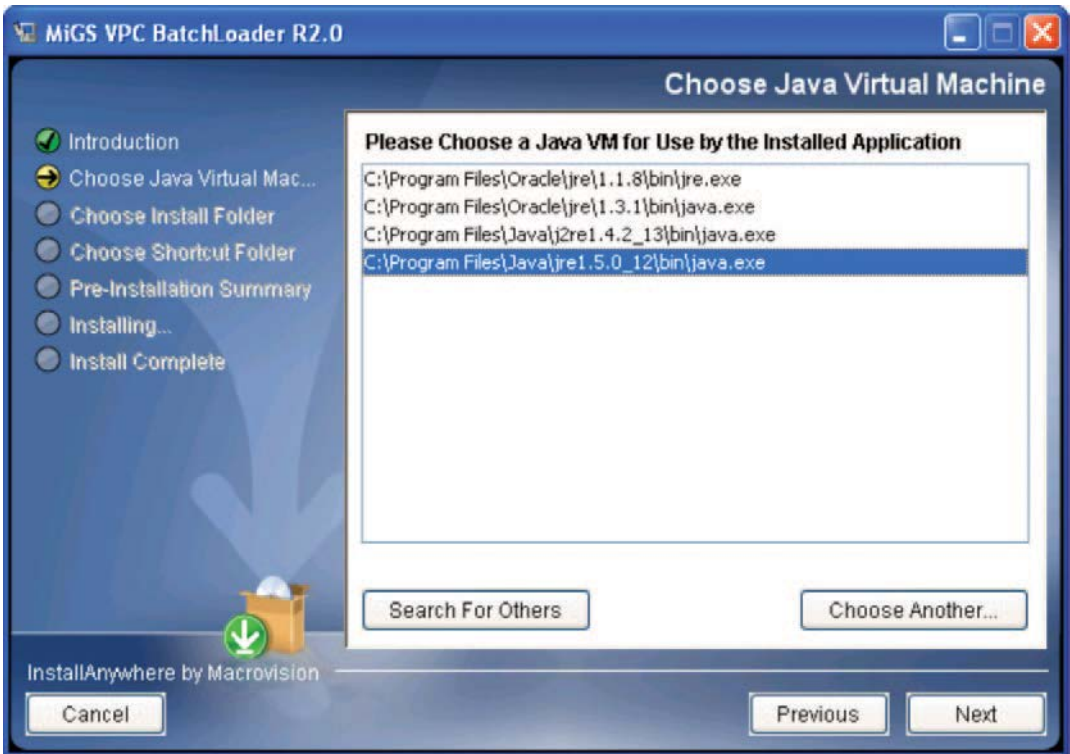
The installation program will begin with an “Introduction” screen. Click Next to proceed.



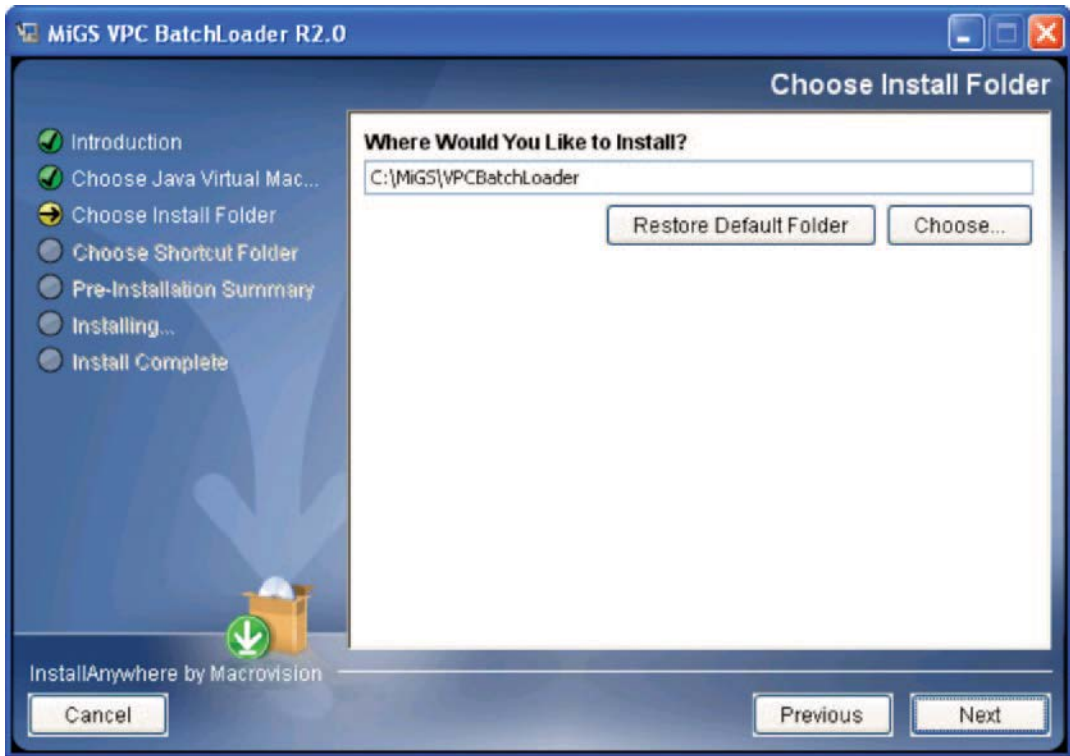
A “Choose Java Virtual Machine” screen will be displayed. A list of recognised Java Virtual Machines (JVMs) will be listed.

Note: The correct JVM as specified in the section “Other Software Dependencies” is required.

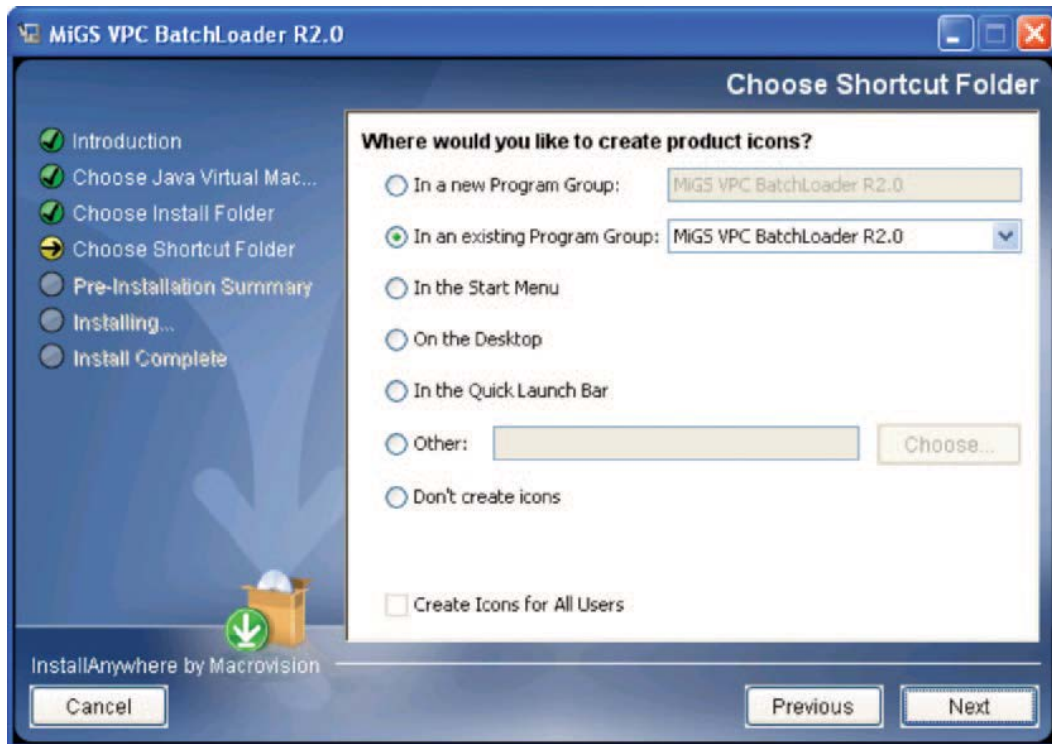
Click Next to proceed.



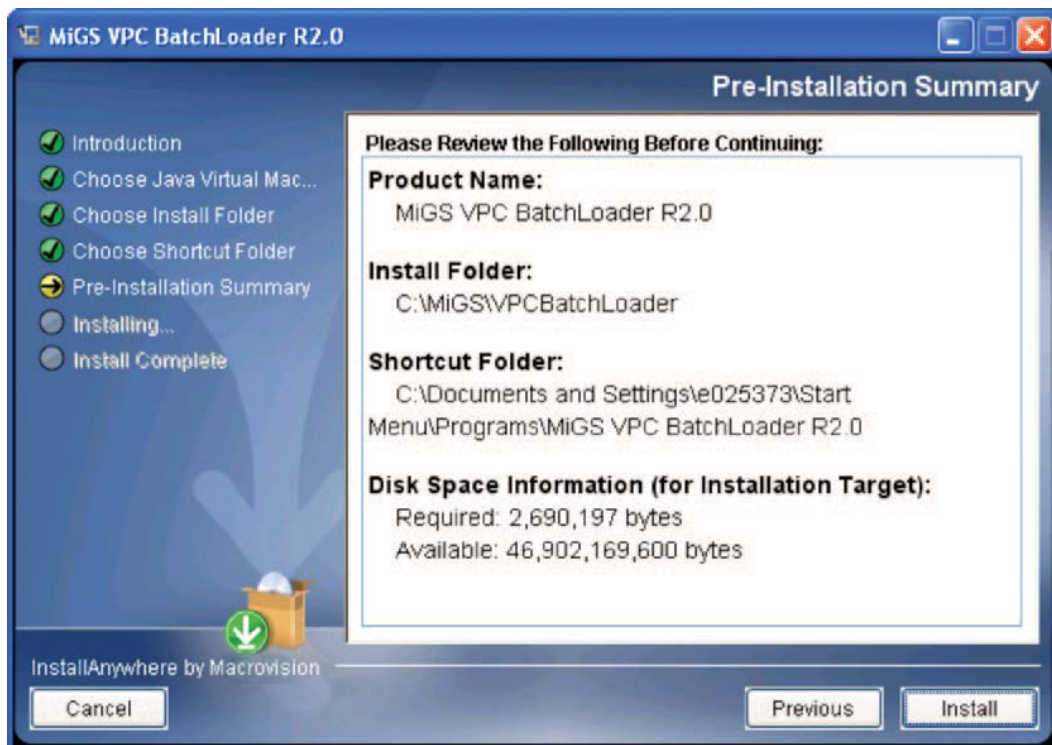
A “Choose Install Folder” screen will be displayed. It is recommended that the default folder should be used. Click Next to proceed.



A “Choose Shortcut Folder” screen will be displayed. It is recommended that the default folder should be used. Click Next to proceed.



A “Pre-Installation Summary” screen will be displayed. Once the user has checked the settings, click Install to proceed.



A progress screen will be displayed. Please wait while the application is installed.

Once the installation is complete, an “Install Complete” screen will be displayed. Click Done to complete the installation process.

Post-Installation Configuration

All following configurations are done by modifying the 'BATCHLOADER.properties' file located in <batchhome>\classes folder (default C:\MiGS\PCBatchLoader\classes)

Please open this file 'BATCHLOADER.properties' by using any text editor, such as notepad or wordpad.

1. Installation Patch setting (You might skip this step, if you install the batch load by using default installation patch.)

Look for 'BATCHLOADER_ROOT', and input the correct patch for the Batch Loader.

Examples

BATCHLOADER_ROOT=C:\\MiGS\\BatchLoader

2. Look for 'MIGS.TARGETURL'

Please make sure the URL is 'https://migs.mastercard.com.au/vpcdps'.

MIGS.TARGETURL=https://migs.mastercard.com.au/vpcdps

3. Look for 'ACCESSCODE'

Please input the Accesscode you retrived from Merchant Administration (MA) portal or from Suncorp Bank.

For detailed information on the settings configurable in the BATCHLOADER.properties configuration file, please refer to Appendix A.

Using the Batch Loader

This section contains information on the operation of the Batch Loader application.

Starting the Batch Loader in Windows

As mentioned in a previous section, the Batch Loader can be started via:

Start -> Programs -> MiGS VPC Batchloader R2.0 -> Load

An "ERRBATCHLOADER" screen will be displayed if there is an error. Please refer to Appendix B.

The Validate Only Cycle

Once the Batch Loader has been successfully started, the main "Loader" screen will be displayed.

View All Results	Approved	Declined	Error
Pre-Auth/Purchase Transactions	0	0	0
Total Pre-Auth/Purchase Value	\$0.00	\$0.00 (approx)	\$0.00
Refund Transactions	0	0	0
Total Refund Value	\$0.00	\$0.00 (approx)	\$0.00
Capture Transactions	0	0	0
Total Capture Value	\$0.00	\$0.00 (approx)	\$0.00
Unknown Transactions			0

The main "Loader" screen is the interface through which the user will carry out the batch processing task. Notice that the "Batch File" field is currently blank, and that the "Load" button is disabled.

1. Batch File Input Directory

Batch files should be placed in the following directory:

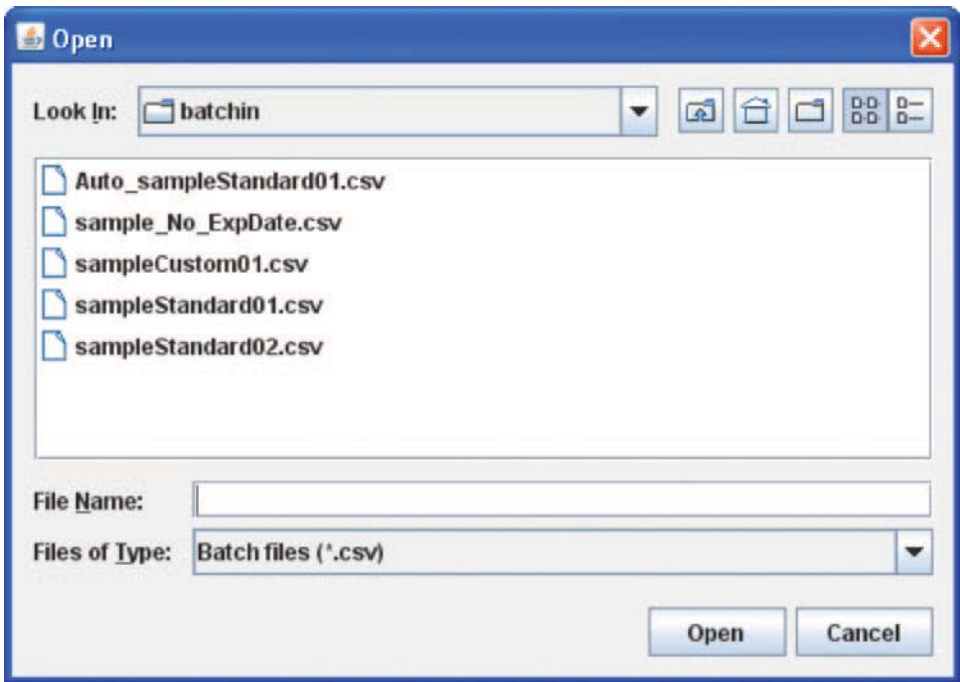
<BATCHHOME>\batchin

This will allow the application to easily locate the batch files to be processed. Although it is not mandatory for batch files to be placed in this directory, it is highly recommended so that the user can keep track of all their files.

Note: batch files must have a unique filename. As detailed in the section "Input and Output File Locations", the application keeps results and status information according to the input filename.

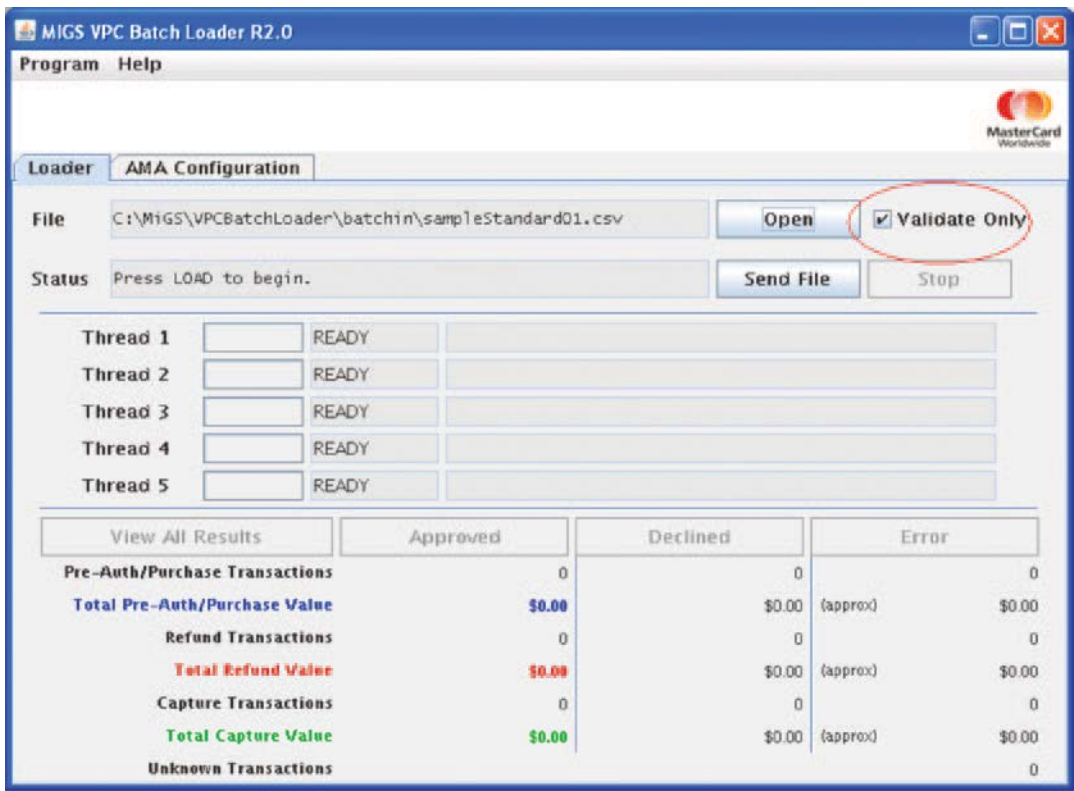
2. Opening a Batch File

To select a batch file, click on the Open button from the “Main Loader” screen. An example batch file is included in the installation package. Select the batch file and click the Open button.



3. Ensuring that “Validate Only” is Checked

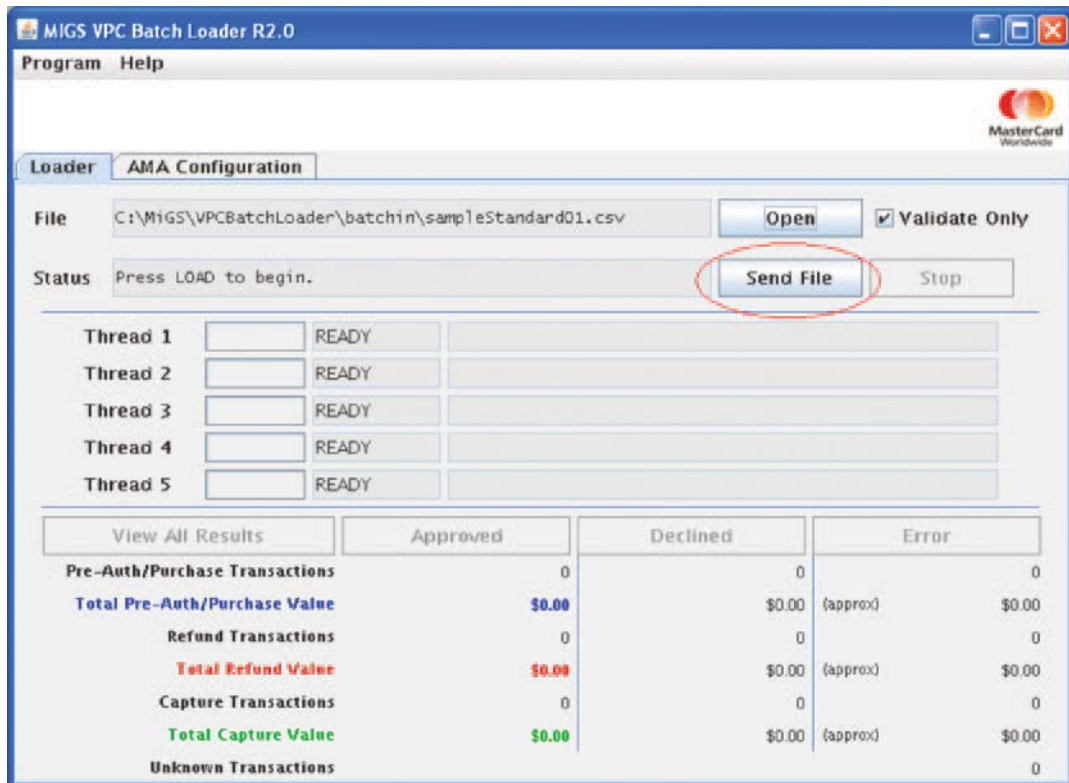
By default, the Validate Only checkbox is ticked when a batch file is selected. Because this option is selected, no transactions will be sent to the server; transactions in the batch file will be checked for common formatting errors.



Notice that the “Batch File” field will display the filename of the selected batch file. Once a batch file has been selected, the “Load” button is enabled as illustrated above.

4. Starting the “Validate Only” Cycle

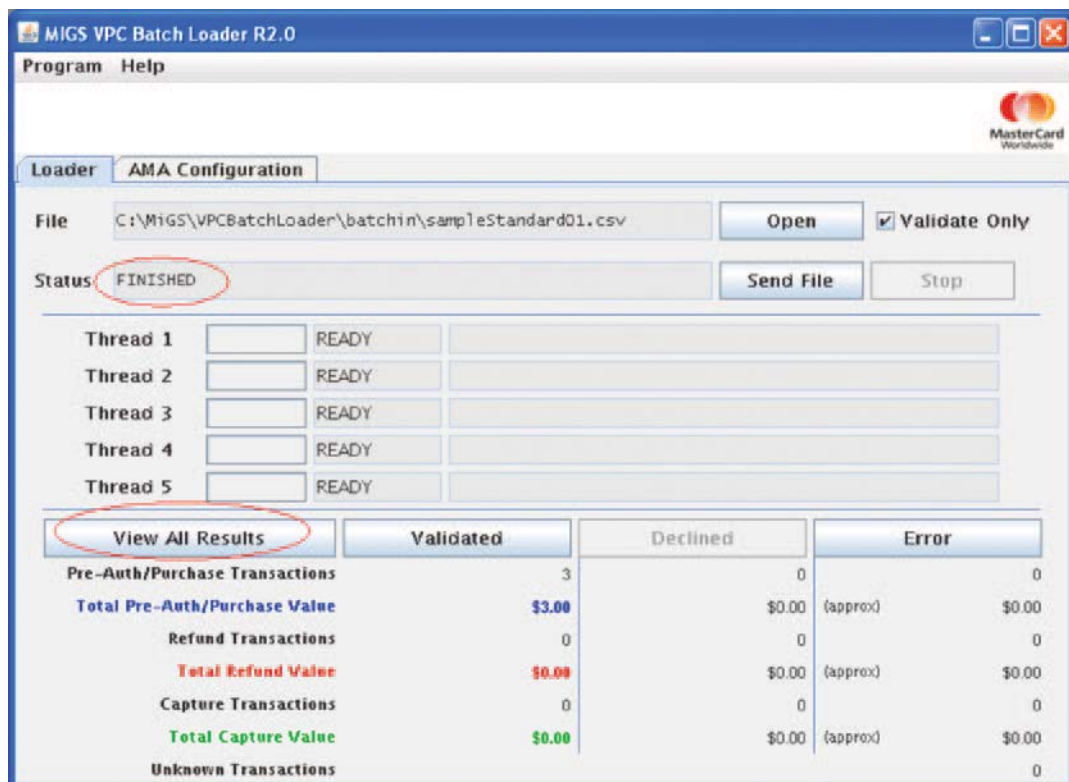
The validation can be started via the Load button.



The progress will be displayed while validation is taking place.

5. Checking the Results from the “Validate Only” Cycle

Please wait while the application performs validation. Once it is complete, the application will display “FINISHED” in the “Status” field. Several results buttons will also be enabled.



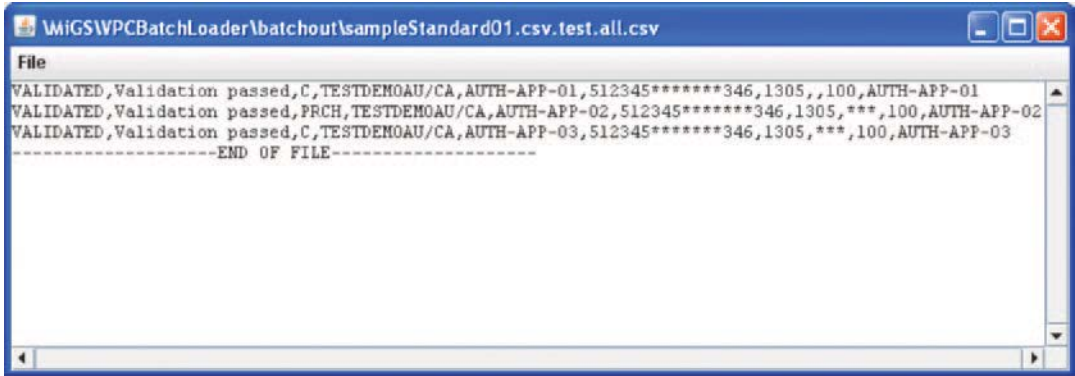
The View All Results button will display the validation status of all transactions contained in the input batch file. This includes all validated and error results (file.csv.test.all.csv).

The Validated button will display the validation status of all validated transactions (file.csv.test.app.csv).

The Error button will display the error transactions exactly as it appears in the input batch file (file.csv.test.err.csv).

Please refer to Appendix B and C for detailed information on result codes and result information.

The following is an example of the .all.csv file that is displayed when the View All Results button is pressed.



6. Amending the Input Batch File

The user should take note of any error transactions, and make any modifications necessary. Because this is the “Validate Only” cycle, the user may make modifications to the original input batch file.

The user is encouraged to validate the input batch file until the batch file is deemed fit for the “Processing” cycle.

To repeat the “Validate Only” cycle after making modifications, the user should ensure that the Validate Only option is selected, and click on the Load button to revalidate.

Note: the most common source of validation errors are fields that are too long / too short, or fields that contain invalid information (for example a card number failing MOD10 check).

The AMA Configuration Screen

If the input batch file contains transactions, such as Capture and Refund, requiring “Advanced Merchant Administration” usernames and passwords, they can be configured in the “AMA Configuration” screen.

The AMA User can be created by login to Merchant Administration Portal. Please refer to the Merchant Administration Guide for more information.

	Merchant ID	AMA Username	Password	Confirm
1	TESTMERCHANT1	AMA		
2	TESTMERCHANT2	user2		
3	TESTMERCHANT3	user3		
4	TESTMERCHANT4	user4		
5	TESTMERCHANT5	user5		

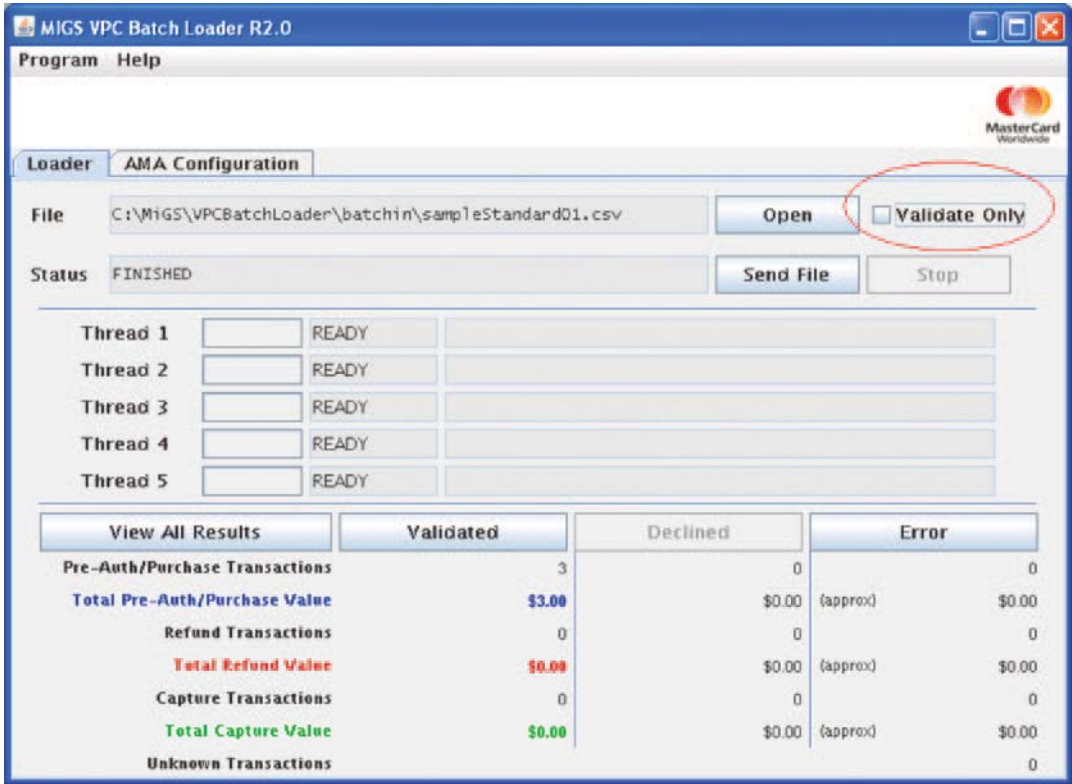
Up to five (5) AMA usernames/passwords can be configured.

The Processing Cycle

Once the user has validated the batch file, they may begin the “Processing” cycle.

7. Ensuring that “Validate Only” is Cleared

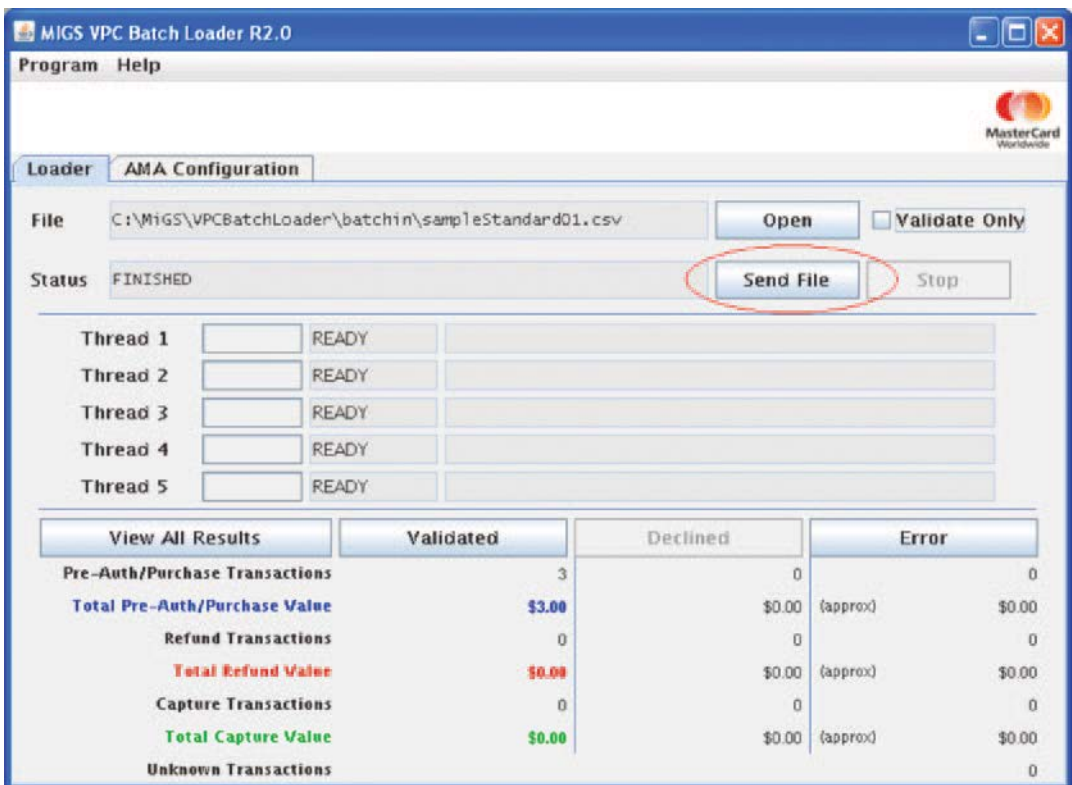
To start the “Processing” cycle, ensure that the “Validate Only” checkbox is cleared as illustrated below.



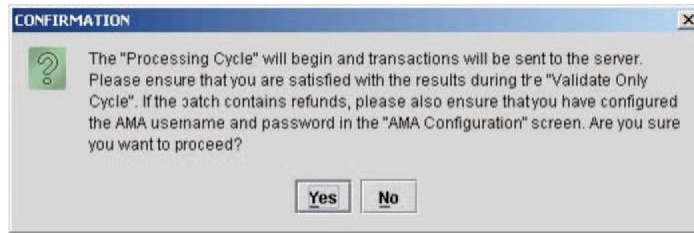
Note: by clearing the “Validate Only” checkbox, transactions will be sent to the server when the “Load” button is pressed.

8. Starting the “Processing” Cycle

The processing can be started via the Send File button.



A confirmation popup for the start of the “Processing” cycle will appear. Click Yes to proceed or No to cancel processing.



9. Waiting for the “Processing” Cycle to Finish

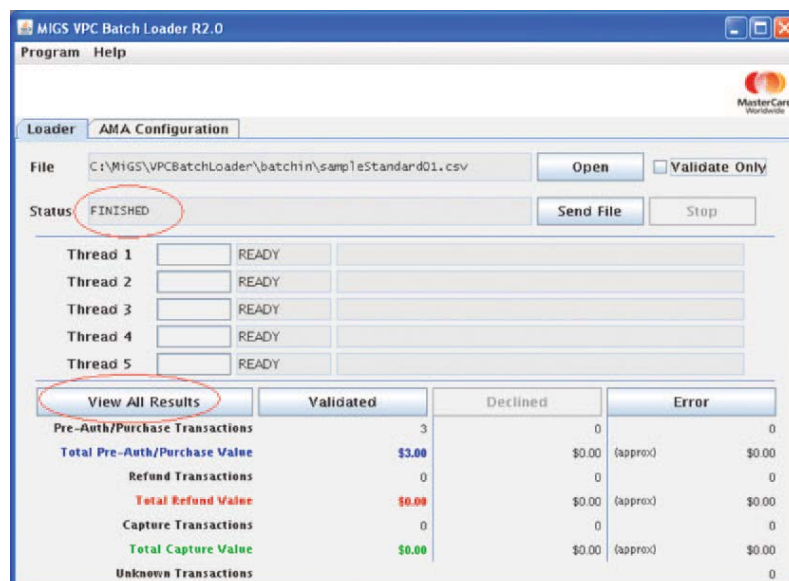
Please wait while the application performs processing. The total time is dependent on the size of the batch file, the speed of the computer, the speed of the internet connection, and the authorisation time taken for each transaction.

The processing can be stopped via the Stop button, the File > Exit menu item, or the X at the top right corner of the application. If the processing needs to be stopped, please wait patiently while the application finishes off transactions that have already been sent to the server.

Note: the application cannot be closed while a batch file is being processed. If the File > Exit menu item, or the X is pressed while a batch is being processed, this will be equivalent to pressing the Stop button. To close the application press the File > Exit menu item or the X while batch processing has finished or has stopped.

10. Checking the Results from the “Processing” Cycle

Once the “Processing” cycle is complete, the application will display “FINISHED” in the “Status” field. Several results buttons will also be enabled.



The View All Results button will display the results of all transactions. This includes all approved, declined, and error results (file.csv.all.csv).

The Approved button will display the results of all approved transactions (file.csv.app.csv).

The Declined button will display the declined transactions exactly as it appears in the input batch file (file.csv.dec.csv).

The Error button will display the error transactions exactly as it appears in the input batch file (file.csv.err.csv).

An extra state file (file.csv.state) contains the information on which lines of the input batch file has been processed. This file is for the internal use of the application only. PLEASE DO NOT EDIT OR REMOVE THIS FILE, this is especially important if the processing was stopped before it was finished, as this file allows the application to resume processing at the last unprocessed transaction.

Business Processes for Declined and Error Transactions

The declined (file.csv.dec.csv) and error (file.csv.err.csv) files contain transactions copied from the input batch file. The exact reason for the decline/error should be crosschecked with the results file (file.csv.all.csv) and a business decision be made whether to correct and reprocess these transactions.

DO NOT MODIFY THESE FILES DIRECTLY – these files can be copied back into the input directory as a new batch file. Please rename it to a unique batch filename.

Refunding Transactions

The approved results file file.csv.app.csv contains the necessary information for processing refunds. DO NOT MODIFY THIS FILE DIRECTLY – this file can be copied back into the input directory as a new batch file. Please rename it to a unique batch filename.

The “TXNTYPE” field can be changed from a charge to a refund, while the “TRANSACTIONNO” can be used. All other irrelevant fields should be removed to conform to the refunds format (see Appendix C).

This section contains information on the uninstallation of the Batch Loader application.

Before Uninstalling the Batch Loader

Note: before uninstalling the Batch Loader please ensure that the batchin and batchout directories (input batch files, and output results) are backed up in a safe location.

Uninstalling the Batch Loader in Windows

The Batch Loader can be uninstalled via:

Start -> Programs -> BatchLoader -> Uninstall

Follow the onscreen instructions to uninstall the application.

Advanced Functions

This section contains information on the advanced functions and settings of the Batch Loader application.

Before users attempt to utilise these advance functions they should have a good understanding of how the Batch Loader functions and the input/output formats.

Automating Batch Loader

- By starting the Batch Loader with Load_Auto.exe the Batch Loader will search through the batchin and process all files that starts with certain pattern (default is "Auto").

This pattern can be changed/defined in

\BatchLoader\classes\BATCHLOADER.properties
in the line

INPUT_PATTERN=Auto

- Next is to add running Load_Auto.exe as a windows scheduled task, please navigate to:

Start > All Programs > Accessory > System Tools > Scheduled Tasks

- Click on Add Scheduled Task
- Click on Next
- Click on Browse
- Browse to the Batch Loader folder and select Load_Auto.exe
- Select desired frequency and time.

In the log directory there will be a log file called autotask.log which will have details on the automated tasks.

For example:

```
Wed Mar 15 17:40:45 EST 2006
ROOTDIR = C:\MiGS\BatchLoader
INPUT_DIRECTORY = C:\MiGS\BatchLoader\
batchin
OUTPUT_DIRECTORY = C:\MiGS\BatchLoader\
batchout
INPUT_PATTERN = Auto
VALIDATE_ONLY = false
Ready to process 1 input files
... Auto Processing
C:\MiGS\BatchLoader\batchin\Auto_
sampleStandard01.csv
... done #0
Finished auto processing
Operating in the Background The Batch Loader can
be ran hidden automatically.
Right click on Load_Auto.exe
Select Properties
In the "Target:" field, delete the word "show" at the
end.
Next time the Batch Loader is run from Load_Auto.
exe it will start processing without showing its
window.
```

Custom input directory

You can define your own input directory in

\BatchLoader\classes\BATCHLOADER.properties

by removing the # infront of the line

```
INPUT_DIRECTORY=C:\\MiGS\\BatchLoader\\
MERCHANT_DEFINED
```

Recurring Payments

User may send an empty expiry date field if optional expiry date is activated.

For example, a purchase transaction line will be:

C,MERCHANTID,MERCHREF,(xxxx xxxx xxxx xxxx) 16 digit card details,123,500,ORDERINF

To activate the optional expiry date, users will have to open the "BATCHLOADER.properties" file in the classes folder; and uncomment the line: (take away the #)

#RECURPAY_CARDEXP=Optional

During validation, if no Exp Date is specified or it is all "spaces", it will pass validation. If the exp date has anything other than spaces, validation will still check for its formatting as per nonrecurring payments.

Note: The merchant account has to be setup by their bank to send "Recurring Transaction Subtype" as default, before they can utilise recurring payments. Please consult your bank.

Appendix A

BATCHLOADER.properties

Below is an example listing for the configuration file.

```
#####  
# Copyright 2007 MasterCard International  
# BATCHLOADER.properties - MiGS VPC BatchLoader Configuration File  
#  
# Lines that are prefixed with “#” are comments lines.  
# Lines that are NOT prefixed with “#” are settings lines.  
# Lines that appear more than once will take the value furthest down in file.  
#####  
  
#-----  
# BATCHLOADER_ROOT  
# Must be set to the batch installation directory. Note that Windows  
# directories are separated by double backslash \\ and there is no trailing \\  
# -----  
# Examples  
# BATCHLOADER_ROOT=C:\\MiGS\\BatchLoader  
#-----  
BATCHLOADER_ROOT=\\MiGS\\VPCBatchLoader  
  
#-----  
# INPUT_DIRECTORY  
# User Defined Input Directory, default is “\\BatchLoader\\batchin”  
#-----  
#INPUT_DIRECTORY=C:\\MiGS\\VPCBatchLoader\\MERCHANT_DEFINED  
  
#-----  
# RECURPAY_CARDEXP  
# Uncomment the line below and the batchloader will not check the existence  
# of the card expiry date. (For recurring payments)  
#-----  
RECURPAY_CARDEXP=Optional
```

```

#-----
# INPUT_PATTERN
# Only batch filenames that starts with the defined INPUT_PATTERN will execute
# when the BatchLoader is in Auto Mode.
#-----

INPUT_PATTERN=Auto

#-----

# BATCHLOADER_DOFORMAT
# Must be set to the input file format. Refer to documentation for details.
# -----
# Examples
# BATCHLOADER_DOFORMAT=BATCHLINECUSTOM1
# BATCHLOADER_DOFORMAT=BATCHLINESTANDARD
#-----

BATCHLOADER_DOFORMAT=BATCHLINESTANDARD
#BATCHLOADER_DOFORMAT=BATCHLINECUSTOM1

#-----

# BATCHLOADER_CCMASK16
# Masking format for 16 digit card numbers in the ".out.csv" results file
# -----
# Examples
# (DEFAULT) Mask ALL digits
# 0.4 Show only the last 4 digits
# 6.3 Show only the first 6 and the last 3 digits
# 6.4 Show only the first 6 and the last 4 digits
# NONE No masking, display all digits
#-----

BATCHLOADER_CCMASK=6.3

#-----

# AMA Username and Password Configuration
# Preset the AMA merchant ID and usernames for refunds processing
# -----

```



```

# Examples
# BATCHLOADER_AMA_MERCHANT1_ID=TESTMERCHANT1
# BATCHLOADER_AMA_MERCHANT1_USER=user1
#-----
BATCHLOADER_AMA_MERCHANT1_ID=TESTMERCHANT1
BATCHLOADER_AMA_MERCHANT1_USER=AMA
BATCHLOADER_AMA_MERCHANT1_PASS=password123
BATCHLOADER_AMA_MERCHANT2_ID=TESTMERCHANT2
BATCHLOADER_AMA_MERCHANT2_USER=user2
BATCHLOADER_AMA_MERCHANT3_ID=TESTMERCHANT3
BATCHLOADER_AMA_MERCHANT3_USER=user3
BATCHLOADER_AMA_MERCHANT4_ID=TESTMERCHANT4
BATCHLOADER_AMA_MERCHANT4_USER=user4
BATCHLOADER_AMA_MERCHANT5_ID=TESTMERCHANT5
BATCHLOADER_AMA_MERCHANT5_USER=user5
#####
# THE FOLLOWING FIELDS MUST NOT BE CHANGED
#####

BATCHLOADER_ECHO=BATCHLOADER_ECHO
BATCHLOADER_NAME=MiGS VPC Batch Loader
BATCHLOADER_VERSION=R2.0

#####
# UNUSED SETTINGS
#####
#BATCHLOADER_COMPILATION=WIN32

#--- LOGGING -----
#--- WARNING: DO NOT CHANGE THESE VALUES AS THIS MAY LEAD TO LOGGING FAILURE.
log4j.rootCategory = DEBUG, MIGSAPPENDER
log4j.appender.MIGSAPPENDER=org.apache.log4j.ConsoleAppender
#log4j.appender.MIGSAPPENDER=org.apache.log4j.DailyRollingFileAppender
log4j.appender.MIGSAPPENDER.layout=org.apache.log4j.PatternLayout
log4j.appender.MIGSAPPENDER.layout.ConversionPattern=%d{yyyy-MM-dd HH:mm:ss.SSS} %-5p %c{1} %m%n

```

#-----

TARGET URL

The VPC Batchloader no longer relies on the Payment Client to point to the

desired URL. This configuration defines where you are sending the batch transactions

#-----

#MIGS.TARGETURL=https://

MIGS.TARGETURL=https://migs.mastercard.com.au/vpcdps

#-----

ACCESSCODE

Every MerchantID will have their unique Access Code. It can be retrieved from

your Merchant Administration Portal.

Examples

ACCESSCODE=A605VBD4

#-----

ACCESSCODE=<your Accesscode here>

Appendix B

This section contains detailed information on RESULTCODEs displayed by the Batch Loader application.

ERRBATCHLOADER (BatchLoader Configuration Errors)

ERRBATCHLOADER error messages typically depict configuration errors of the application. With the exception of L000 and L001, these errors will prevent the application from processing the batch file.

Info	Description / Resolution
B000	Could not find the Payment Client. Please check the "lax.class.path" setting in the Load.lax file, or check your CLASSPATH environment variable.
B001	BATCHLOADER.properties configuration problem
B002	A lock file indicates that the application is already running. Only one instance of the Batch Loader can run at any one time. The lock file may have been left behind by a previous crash. If you are 100% sure no other instances of the Batch Loader is running, you may remove the BATCHLOADER.lock file from the "log" directory and restart the application.
B003	Unable to create ".state" file. Please check that the files in "batchout" are not writeprotected, and that you have read/write access to the "batchout" directory.
B004	There is a problem with the selected batch file. Please check that the file exists, and that you have read access to the file, and that it is a supported batch file type.
B005	There is a problem with the selected batch file. Please check that the file exists, and that you have read access to the file, and that it is a supported batch file type.
B006	Unable to create ".all.csv" file. Please check that the files in "batchout" are not writeprotected, and that you have read/write access to the "batchout" directory.
B007	Unable to create ".app.csv" file. Please check that the files in "batchout" are not writeprotected, and that you have read/write access to the "batchout" directory.
B008	Unable to create ".dec.csv" file. Please check that the files in "batchout" are not writeprotected, and that you have read/write access to the "batchout" directory.
B009	Unable to create ".err.csv" file. Please check that the files in "batchout" are not writeprotected, and that you have read/write access to the "batchout" directory.
L000	No AMA username specified for this merchant ID. This is returned in the RESULTCODE and RESULTINFO field during validation or processing. Please configure the appropriate MerchantID/username/password in the AMA Configuration screen.
L001	Invalid BATCHLOADER_DOFORMAT specified in the configuration file BATCHLOADER.properties. This is returned in the RESULTCODE and RESULTINFO field during validation or processing. Please ensure that a correct value has been configured, and close and restart the application.

ERRRECORD (Batch File Record Errors)

ERRRECORD error messages indicate formatting errors in a particular transaction line in the input batch file.

During the “Validate Only” cycle, validated transactions will be marked as “VALIDATED”, otherwise the suitable ERRRECORD will be recorded.

During the “Processing” cycle, all transactions marked with ERRRECORD will be stopped by the application and will not be sent to the server.

Info	Description / Resolution
R000	Blank line – indicates a blank line in the batch file.
R010	Input TXNTYPE is invalid. Check the error message for details.
R011	Input MERCHANTID is invalid. Check the error message for details.
R012	Input MERCHTXNREF is invalid. Check the error message for details.
R013	Input CARDNUM is invalid. Check the error message for details.
R014	Input CARDEXP is invalid. Check the error message for details.
R015	Input CARD CSC is invalid. Check the error message for details.
R016	Input AMOUNT is invalid. Check the error message for details.
R017	Input ORDERINFO is invalid. Check the error message for details.
R018	Input TRANSACTIONNO is invalid. Check the error message for details.

ERRPC (Payment Client Errors)

ERRPC error messages will only occur during the “Processing” cycle. ERRPC messages indicate that the formatting of the particular transaction line has been validated, and has been passed to the Payment Client, however an error has occurred at the Payment Client. Typical errors include nonexistent MERCHANTIDs, internet connection errors, amongst others.

Please check the Payment Client documentation for a full listing of Payment Client Errors.

APPROVED / DECLINED

Transactions that have successfully reached the authorisation process will have a RESULTCODE of APPROVED or DECLINED.

Resultcode	Description
APPROVED	Transaction has gone through authorisation and has been approved.
DECLINED	Transaction has gone through authorisation and has been declined.

Appendix C

This section contains information on the input file formats supported by the Batch Loader application.

BATCHLINESTANDARD

The input file format is specified in the BATCHLOADER.properties configuration file. To use the "BATCHLINESTANDARD" file format, the following must be configured:

BATCHLOADER_DOFORMAT=BATCHLINESTANDARD

BATCHLINESTANDARD - Charge - Input Format

#	Input field	Required	Min Chars	Max Chars	Comments
1	TXNTYPE	Y	1	1	Must be "C" for MOTO transactions.
2	MERCHANTID	Y	1	16	Provided merchant ID.
3	MERCHTXNREF	N	~	40	Merchant generated unique reference.
4	CARDNUM	Y	13	19	Card number to be charged. BatchLoader will do MOD10 check.
5	CARDEXP	Y	4	4	Format YYMM. MM is checked to be <= 12.
6	CARDCSC	N	~	4	Card Security Code (CVC2/CVV2).
7	AMOUNT	Y	1	10	In CENTS (e.g. \$1 = 100). Must not be <= 0.
8	ORDERINFO	Y	1	34	Merchant generated reference.

#	Output Field	Comments
1	RESULTCODE	Result of the transaction.
2	RESULTINFO	Detailed information of the results.
3	TXNTYPE	same as input
4	MERCHANTID	same as input
5	MERCHTXNREF	same as input
6	CARDNUM	same as input (may be masked if configured).
7	CARDEXP	same as input
8	CARDCSC	always masked
9	AMOUNT	same as input
10	ORDERINFO	same as input
11	QSIRESPCODE	Receipt QSI Response Code
12	QSIRESPCODEDESC	Receipt QSI Response Code Description
13	AMOUNT	Receipt Authorized Amount
14	RECEIPTNO	Receipt Receipt Number
15	ACQRESPCODE	Receipt Acquirer Response Code
16	AUTHORIZEID	Receipt Authorization ID
17	BATCHNO	Receipt Settlement Batch Number
18	TRANSACTIONNO	Receipt Shopping Transaction No
19	CARDTYPE	Receipt Recognized Card Type

***Note:** error transactions (that are not sent to the server) may not contain receipt fields 1119.

BATCHLINESTANDARD - Refund - Input Format

#	Input field	Required	Min Chars	Max Chars	Comments
	TXNTYPE	Y	1	1	Must be "R" for refund transactions.
	MERCHANTID	Y	1	16	Provided merchant ID.
	MERCHTXNREF	N	~	40	Merchant generated unique reference.
	TRANSACTIONNO	Y	1	19	Shopping Transaction No from a previous Charge transaction.
	AMOUNT	Y	1	34	In CENTS (e.g. \$1 = 100). Must not be <= 0.

BATCHLINESTANDARD – Refund – Output Format

#	Output Field	Comments
1	RESULTCODE	Result of the transaction.
2	RESULTINFO	Detailed information of the results.
3	TXNTYPE	same as input
4	MERCHANTID	same as input
5	MERCHTXNREF	same as input
6	TRANSACTIONNO	same as input
7	AMOUNT	same as input
8	BLANK	blank field
9	BLANK	blank field
10	BLANK	blank field
11	QSIRESPCODE	Receipt QSI Response Code
12	QSIRESPCODEDESC	Receipt QSI Response Code Description
13	BLANK	blank field
14	RECEIPTNO	Receipt Receipt Number
15	ACQRESPCODE	Receipt Acquirer Response Code
16	AUTHORIZEID	Receipt Authorization ID
17	BATCHNO	Receipt Settlement Batch Number
18	TRANSACTIONNO	Receipt Financial Transaction No
19	BLANK	blank field

***Note:** error transactions (that are not sent to the server) may not contain receipt fields 1119.

BATCHLINESTANDARD – Example

A sample batch file is supplied with the Batch Loader. The following is an example of the BATCHLINESTANDARD charge input format.

```
C,TESTTESAUDALUCYF,MERCHTXNREF01,(xxxx xxxx xxxx xxxx ) 16 digit card details,0504,123,100,ORDERINFO01
C,TESTTESAUDALUCYF,MERCHTXNREF02,(xxxx xxxx xxxx xxxx ) 16 digit card details,0504,1234,100,ORDERINFO02
C,TESTTESAUDALUCYF,MERCHTXNREF03,(xxxx xxxx xxxx xxxx ) 16 digit card details,0504,123,100,ORDERINFO03
```

Contact us



Call **13 11 75**



Online
suncorpbank.com.au



Local Branch